

Sabroe TCMO 28 aggregate

Specifications

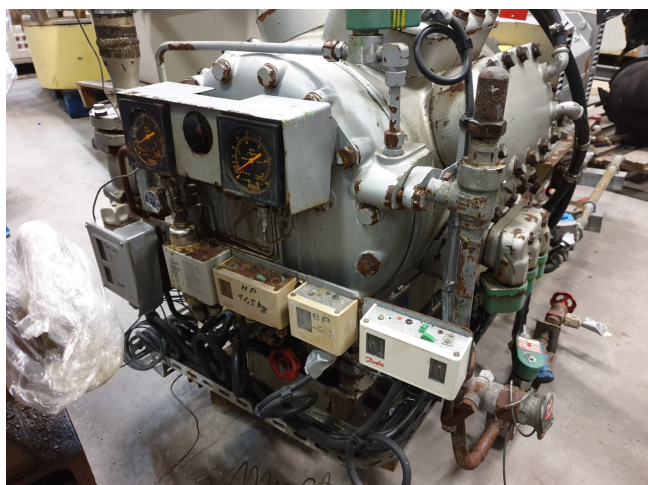
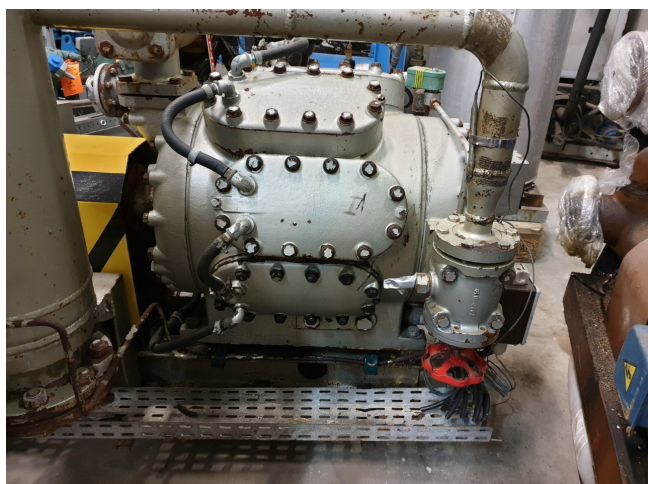
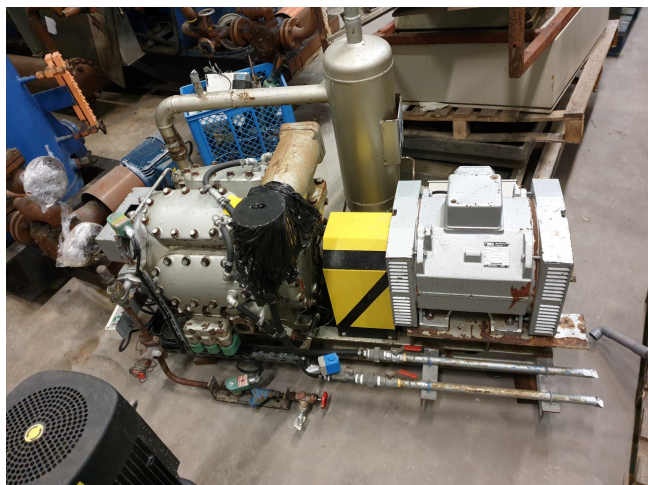
Brand	Sabroe
Type	TCMO 28 aggregate
Refrigerant	Freon
kW at 0°C/+40°C	108
kW at -5°C/+40°C	98.4
kW at -10°C/+40°C	73
kW at -20°C/+40°C	47.8
kW at -30°C/+40°C	29.7
kW at -40°C/+40°C	17.4
Electromotor Specs	22 kW at 1450 RPM
On steel base frame	✓
Pressure safety switches	✓
Hp/Lp/Op	
Pressure gauges	✓
Hp/Lp/Op	
Remarks	Our capacity table is based on Manufacturer spec. We would like to know which refrigerant is in your system
Stock	1

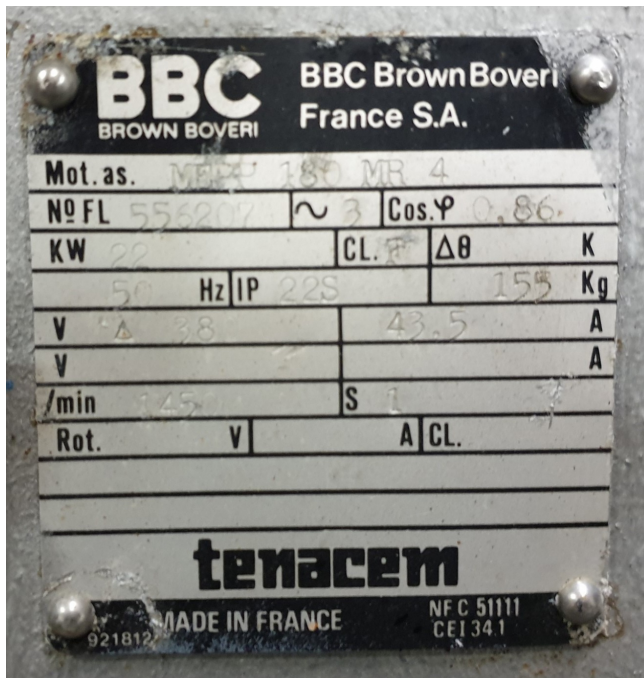


Description

Used Sabroe TCMO 28 aggregate

Used Sabroe TCMO 28 piston compressor with electromotor 22 kW at 1450 RPM. For all the other specs (if available), see the picture of the manufacturer model plate or the attached pdf file. *Why choose for HOSBV? Were not only the largest used refrigeration specialist in Europe, but also, we deliver all equipment including an extensive test, warranty and industrial cleaning. *Optional we can also perform a new paint job and arrange the logistics.





Model	Number of cylinders low/high-pressure side	Swept volume at 1500 rpm		Swept volume at 3000 rpm		Nominal capacities in MW		Unit dimensions in mm			Weight excluding motor	Sound pressure level at 1500 rpm		Sound pressure level at 3000 rpm	
		m ³ /h	m ³ /h	m ³ /h	m ³ /h	-40/+23°C	-40/+23°C	L	W	H	kg	dB(A)	dB(A)	dB(A)	dB(A)
TCM 20	6/2	150	225	23	28	1400-1750	1400-1750	700	1000	500	69	71	82	83	84
TCM 30	6/2	230	407	50	60	2100-2915	2100-2915	1052	1247	1761	81	83	83	84	84
TCM 50	6/2	424	509	66	79	2100-2915	2100-2915	1052	1247	1761	81	83	83	84	84
TCM 100	6/2	509	N/A	81	N/A	2100-2915	2100-2915	1052	1247	1761	81	83	83	84	84
TCM 150	12/4	679	854	100	121	3120-3717	3120-3717	1327	1445	2791	81	83	83	84	84
TCM 200	12/4	848	1058	133	159	3120-3717	3120-3717	1327	1445	2841	81	83	83	84	84
TCM 300	12/4	1058	N/A	163	N/A	3120-3717	3120-3717	1327	1445	2841	81	83	83	84	84